

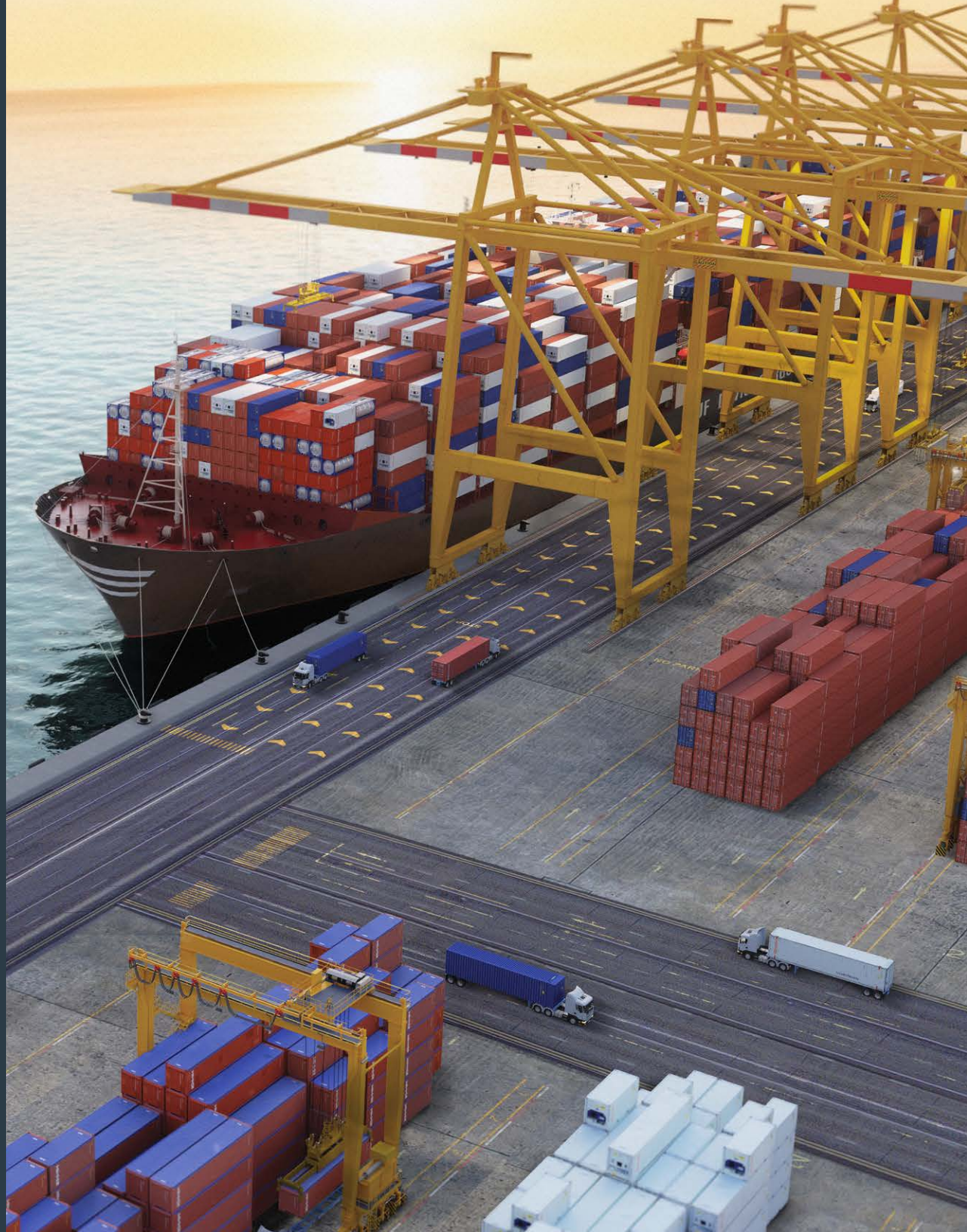


TRITON

OUR SECTORS

Shipping

Our vast range of products and services have been supporting the shipping sector for many years.



OUR SECTORS – SHIPPING

The go-to supplier of the global shipping industry

With an active container fleet of more than 7 million TEU, we are the container leasing company of choice to many of the world's major cargo shipping lines.

Through our extensive range of products and services, combined with our vast global network, we can offer our shipping industry customers multiple solutions for shipping and transporting products around the world. At Triton, we provide high-quality containers that undergo rigorous testing to meet all ISO standards.

Supporting the shipping sector for over 50 years

We are the number one supplier to seven of the top ten global shipping lines, and in 2021, we supplied all top ten shipping lines with new or used containers. In addition, we have provided 1.4 million new TEUs to top shipping lines since July 2020.

We also purchase and resell containers from our shipping line customers. Please get in touch with your local Triton representative for more information.

Shipping lines

Our ability to supply the right equipment at the right place and time ensures we are always there to meet the needs of the world's ocean carriers.

NVOCC/3PL/BCOs

Reliable access to shipper-owned (SOC) container supply for critical shipments.

Ocean terminals

Our extensive range of Chassis and Roll Trailers provides various solutions for moving equipment within even the busiest container terminals and cargo docks.

Short sea operators

We are committed to helping reduce road congestion and increasing sustainability.

MPV vessel operators

We provide our MPV customers with the capability to offer containers to their customer base for global projects.

PLEASE NOTE: The following pages showcase a small sample of products in the Triton global inventory. We stock a wide range of products for lease and sale in various conditions. Get in touch with your local Triton representative for more information.



20ft Dry Container



CLASSIFICATION

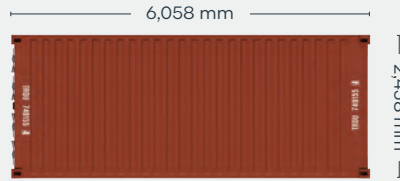
Lease

Available via Triton's global network of supply locations.



FEATURES

- Manufactured with rust resistant corten steel
- Secure and weatherproof, with vents to allow airflow
- Resistant to damage and corrosion
- Superior paint systems
- Triton's industry leading new production testing and inspection criteria ensures the highest quality container
- Incredibly versatile
- Backed up by Triton's global network of supply locations and dedicated leasing and support teams
- Available globally
- IICL-6 repair criteria saves cost at off-hire
- Damage Protection Plan available to reduce costs and time at off-hire
- Flexible lease terms to meet your company needs



CONTAINER ROOF



CONTAINER FRONT

CONTAINER SIDE

CONTAINER REAR

DIMENSIONS (METRIC/IMPERIAL)

EXTERNAL DIMENSIONS

| | | |
|---------------|----------|-----------|
| Length | 6,058 mm | 19' 10.5" |
| Width | 2,438 mm | 8' 0.0" |
| Height | 2,591 mm | 8' 6.0" |

INTERNAL DIMENSIONS

| | | |
|---------------|----------|----------|
| Length | 5,898 mm | 19' 4.2" |
| Width | 2,352 mm | 7' 8.6" |
| Height | 2,393 mm | 7' 10.2" |

DOOR OPENING

| | | |
|---------------|----------|---------|
| Width | 2,340 mm | 7' 8.1" |
| Height | 2,280 mm | 7' 5.8" |

CAPACITY & WEIGHTS

| | | |
|------------------------------|---------------------|----------------------|
| Inside Cubic Capacity | 33.2 m ³ | 1172 ft ³ |
| Max Gross | 30,480 kg | 67,200 lbs |
| Payload | 28,380 kg | 62,570 lbs |
| Tare | 2,100 kg | 4,630 lbs |

NOTE: The dimensions and door openings of all containers correspond to ISO standards. However, due to production tolerances, a difference in measurement is possible.

DISCLAIMER: Every effort is made to ensure this information is accurate, however Triton does not assume any liability for the accuracy of the information and content provided in marketing or information materials, or for the consequences resulting from using the information and content provided. Triton does not guarantee or claim that said information and content is exhaustive. Claims as to the exhaustive nature of said information and content are excluded. The information and content is only provided for advertising purposes and is non-binding. No explicit or implied warranties or guarantees are made. The container displayed only represents a sample of the entire fleet.

The following items are registered or unregistered service marks in the United States and/or foreign jurisdictions pursuant to applicable intellectual property law and are the property of Triton International Limited and its subsidiaries: Triton® and TAL®.



CLASSIFICATION

For Sale: Used

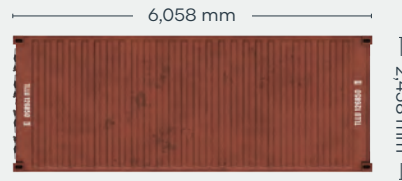
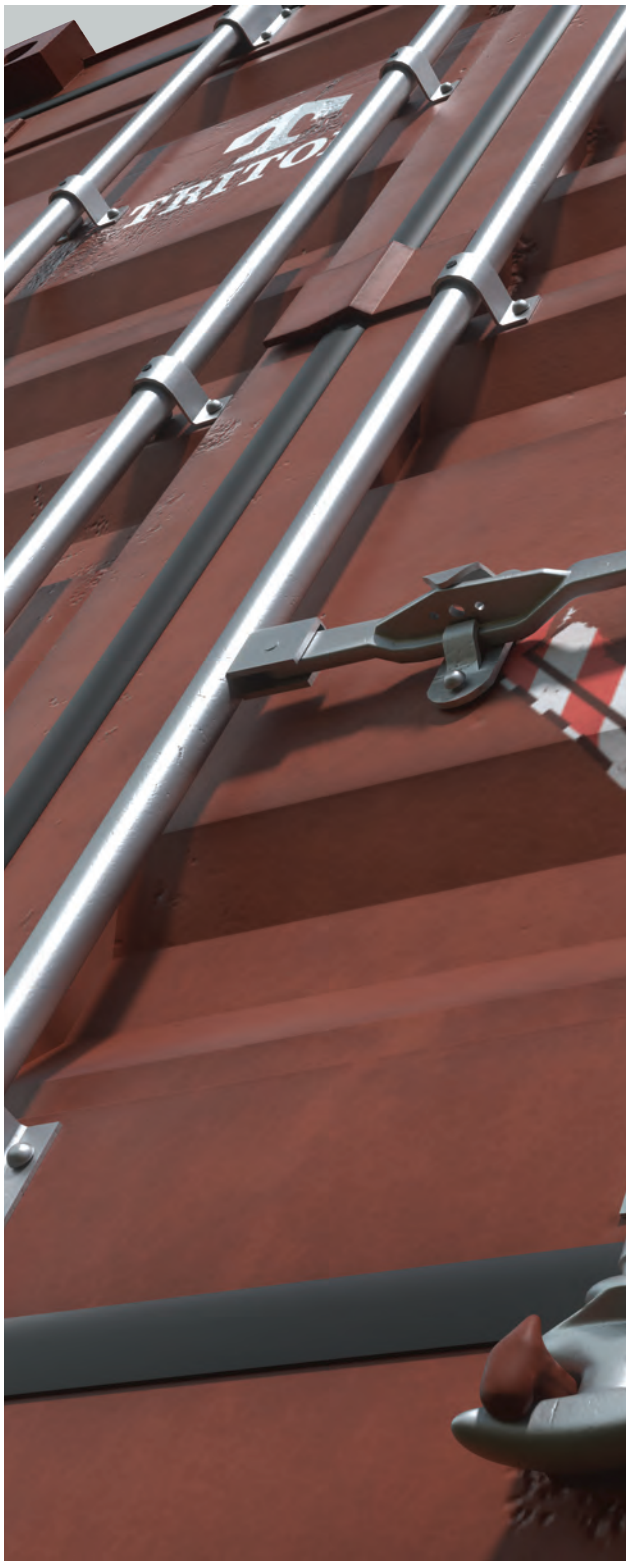
Available via Triton's global network of supply locations.

20ft Used Dry Container



FEATURES

- Available in a range of conditions to suit all needs, from cargo transportation to secure domestic storage
- Generally 11-15 years old when retired from service
- Constructed from rugged corten steel
- Durable and secure, with vents to allow airflow
- Resistant to damage and corrosion
- A variety of options available
- Incredibly versatile and suitable for customers to modify into a wide range of applications
- Available globally
- Backed up by Triton's global network of supply locations and dedicated sales and support teams
- Also available for Direct Delivery to buyer's facilities, providing significant cost savings on transport



CONTAINER ROOF



CONTAINER FRONT

CONTAINER SIDE

CONTAINER REAR

DIMENSIONS (METRIC/IMPERIAL)

EXTERNAL DIMENSIONS

| | | |
|---------------|----------|-----------|
| Length | 6,058 mm | 19' 10.5" |
| Width | 2,438 mm | 8' 0.0" |
| Height | 2,591 mm | 8' 6.0" |

INTERNAL DIMENSIONS

| | | |
|---------------|----------|----------|
| Length | 5,898 mm | 19' 4.2" |
| Width | 2,352 mm | 7' 8.6" |
| Height | 2,393 mm | 7' 10.2" |

DOOR OPENING

| | | |
|---------------|----------|---------|
| Width | 2,340 mm | 7' 8.1" |
| Height | 2,280 mm | 7' 5.8" |

CAPACITY & WEIGHTS

| | | |
|------------------------------|---------------------|----------------------|
| Inside Cubic Capacity | 33.2 m ³ | 1172 ft ³ |
| Max Gross | 30,480 kg | 67,200 lbs |
| Payload | 28,090–28,580 kg | 61,931–63,011 lbs |
| Tare | 1,900–2,390 kg | 4,189–5,269 lbs |

NOTE: The dimensions and door openings of all containers correspond to ISO standards. However, due to production tolerances, a difference in measurement is possible.

DISCLAIMER: Every effort is made to ensure this information is accurate, however Triton does not assume any liability for the accuracy of the information and content provided in marketing or information materials, or for the consequences resulting from using the information and content provided. Triton does not guarantee or claim that said information and content is exhaustive. Claims as to the exhaustive nature of said information and content are excluded. The information and content is only provided for advertising purposes and is non-binding. No explicit or implied warranties or guarantees are made. The container displayed only represents a sample of the entire fleet.

The following items are registered or unregistered service marks in the United States and/or foreign jurisdictions pursuant to applicable intellectual property law and are the property of Triton International Limited and its subsidiaries: Triton® and TAL®.



CLASSIFICATION

For Sale: Used

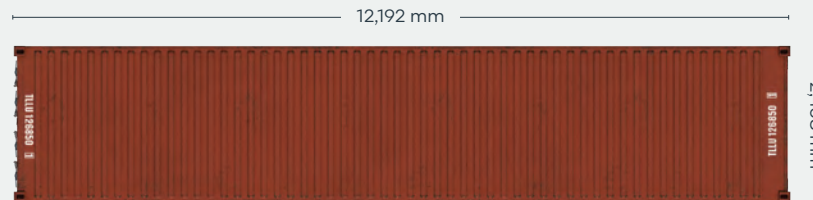
Available via Triton's global network of supply locations.

40ft Used Dry Container

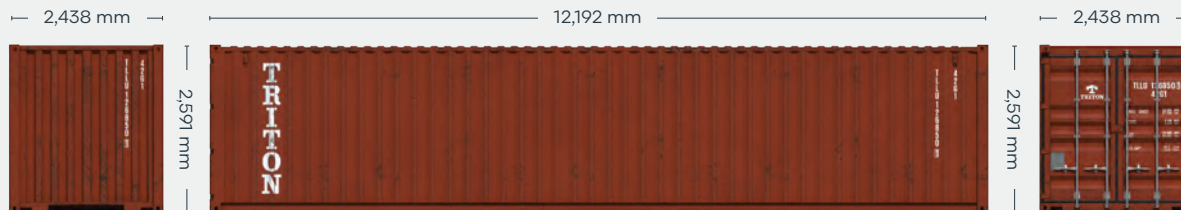


FEATURES

- Available in a range of conditions to suit all needs, from cargo transportation to secure domestic storage
- Generally 11-15 years old when retired from service
- Constructed from rugged corten steel
- Durable and secure, with vents to allow airflow
- Resistant to damage and corrosion
- A variety of options available
- Incredibly versatile and suitable for customers to modify into a wide range of applications
- Available globally
- Backed up by Triton's global network of supply locations and dedicated sales and support teams
- Also available for direct delivery to buyer's facilities, providing significant cost savings on transport



CONTAINER ROOF



CONTAINER FRONT

CONTAINER SIDE

CONTAINER REAR

DIMENSIONS (METRIC/IMPERIAL)

EXTERNAL DIMENSIONS

| | | |
|---------------|-----------|----------|
| Length | 12,192 mm | 40' 0.0" |
| Width | 2,438 mm | 8' 0.0" |
| Height | 2,591 mm | 8' 6.0" |

INTERNAL DIMENSIONS

| | | |
|---------------|-----------|----------|
| Length | 12,032 mm | 39' 5.7" |
| Width | 2,352 mm | 7' 8.6" |
| Height | 2,393 mm | 7' 10.2" |

DOOR OPENING

| | | |
|---------------|----------|---------|
| Width | 2,340 mm | 7' 8.1" |
| Height | 2,280 mm | 7' 5.8" |

CAPACITY & WEIGHTS

| | | |
|------------------------------|---------------------|----------------------|
| Inside Cubic Capacity | 67.7 m ³ | 2390 ft ³ |
| Max Gross | 30,480–32,500 kg | 67,200–71,650 lbs |
| Payload | 26,980–29,070 kg | 59,484–64,090 lbs |
| Tare | 3,430–3,920 kg | 7,560–8,640 lbs |

NOTE: The dimensions and door openings of all containers correspond to ISO standards. However, due to production tolerances, a difference in measurement is possible.

DISCLAIMER: Every effort is made to ensure this information is accurate, however Triton does not assume any liability for the accuracy of the information and content provided in marketing or information materials, or for the consequences resulting from using the information and content provided. Triton does not guarantee or claim that said information and content is exhaustive. Claims as to the exhaustive nature of said information and content are excluded. The information and content is only provided for advertising purposes and is non-binding. No explicit or implied warranties or guarantees are made. The container displayed only represents a sample of the entire fleet.

The following items are registered or unregistered service marks in the United States and/or foreign jurisdictions pursuant to applicable intellectual property law and are the property of Triton International Limited and its subsidiaries: Triton® and TAL®.



CLASSIFICATION

For Sale: New

Available via Triton's global network of supply locations.

40ft Double Door Dry Container

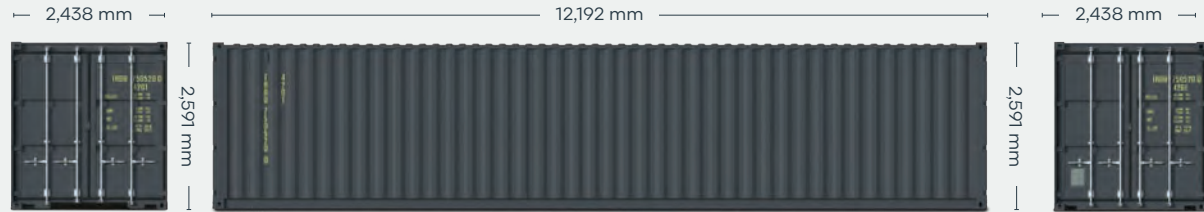


FEATURES

- Cargo doors on both ends provide easy access for stocking and retrieving stored goods
- Manufactured with rust resistant corten steel
- Secure and weatherproof, with vents to allow airflow
- Superior paint systems
- Resistant to damage and corrosion
- Advance orders in your preferred color (minimum volume required)
- Great options including 80 micron floor coating, lock boxes, waist high door locking handles
- Triton's industry leading new production testing and inspection criteria ensures the highest quality container
- Incredibly versatile and suitable for customers to modify into a wide range of applications
- Moved from factory to most major ports in the world
- Backed up by Triton's global network of supply locations and dedicated sales and support teams
- Available globally



CONTAINER ROOF



CONTAINER FRONT

CONTAINER SIDE

CONTAINER REAR

DIMENSIONS (METRIC/IMPERIAL)

EXTERNAL DIMENSIONS

| | | |
|---------------|-----------|----------|
| Length | 12,192 mm | 40' 0.0" |
| Width | 2,438 mm | 8' 0.0" |
| Height | 2,591 mm | 8' 6.0" |

INTERNAL DIMENSIONS

| | | |
|---------------|-----------|----------|
| Length | 11,978 mm | 39' 3.6" |
| Width | 2,352 mm | 7' 8.6" |
| Height | 2,393 mm | 7' 10.2" |

DOOR OPENING

| | | |
|---------------|----------|---------|
| Width | 2,343 mm | 7' 8.2" |
| Height | 2,280 mm | 7' 5.8" |

CAPACITY & WEIGHTS

| | | |
|------------------------------|---------------------|----------------------|
| Inside Cubic Capacity | 67.4 m ³ | 2380 ft ³ |
| Max Gross | 30,480 kg | 67,200 lbs |
| Payload | 26,900 kg | 59,310 lbs |
| Tare | 3,580 kg | 7,890 lbs |

NOTE: The dimensions and door openings of all containers correspond to ISO standards. However, due to production tolerances, a difference in measurement is possible.

DISCLAIMER: Every effort is made to ensure this information is accurate, however Triton does not assume any liability for the accuracy of the information and content provided in marketing or information materials, or for the consequences resulting from using the information and content provided. Triton does not guarantee or claim that said information and content is exhaustive. Claims as to the exhaustive nature of said information and content are excluded. The information and content is only provided for advertising purposes and is non-binding. No explicit or implied warranties or guarantees are made. The container displayed only represents a sample of the entire fleet.

The following items are registered or unregistered service marks in the United States and/or foreign jurisdictions pursuant to applicable intellectual property law and are the property of Triton International Limited and its subsidiaries: Triton® and TAL®.



CLASSIFICATION

For Sale: Used

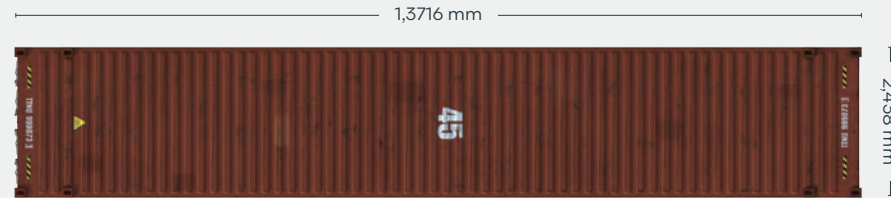
Available via Triton's global network of supply locations.

45ft Used High Cube Dry Container



FEATURES

- Available in a range of conditions to suit all needs, from cargo transportation to secure domestic storage
- Generally 11-15 years old when retired from service
- Constructed from rugged corten steel
- Additional height provides extra internal cubic capacity, which means greater interior stacking capacity for your goods
- Durable and secure, with vents to allow airflow
- Resistant to damage and corrosion
- Superior paint systems
- A variety of options available
- Incredibly versatile and suitable for customers to modify into a wide range of applications
- Available globally
- Backed up by Triton's global network of supply locations and dedicated sales and support teams
- Also available for Direct Delivery to buyer's facilities, providing significant cost savings on transport



CONTAINER ROOF



CONTAINER FRONT

CONTAINER SIDE

CONTAINER REAR

DIMENSIONS (METRIC/IMPERIAL)

EXTERNAL DIMENSIONS

| | | |
|---------------|-----------|----------|
| Length | 13,716 mm | 45' 0.0" |
| Width | 2,438 mm | 8' 0.0" |
| Height | 2,896 mm | 9' 6.0" |

INTERNAL DIMENSIONS

| | | |
|---------------|-----------|----------|
| Length | 13,556 mm | 44' 5.7" |
| Width | 2,352 mm | 7' 8.6" |
| Height | 2,698 mm | 8' 10.2" |

DOOR OPENING

| | | |
|---------------|----------|---------|
| Width | 2,340 mm | 7' 8.1" |
| Height | 2,585 mm | 8' 5.8" |

CAPACITY & WEIGHTS

| | | |
|------------------------------|---------------------|----------------------|
| Inside Cubic Capacity | 86.0 m ³ | 3040 ft ³ |
| Max Gross | 30,480–32,500 kg | 67,200–71,650 lbs |
| Payload | 25,270–27,900 kg | 55,714–61,510 lbs |
| Tare | 4,600 kg–5,210 kg | 10,140–11,486 lbs |

NOTE: The dimensions and door openings of all containers correspond to ISO standards. However, due to production tolerances, a difference in measurement is possible.

DISCLAIMER: Every effort is made to ensure this information is accurate, however Triton does not assume any liability for the accuracy of the information and content provided in marketing or information materials, or for the consequences resulting from using the information and content provided. Triton does not guarantee or claim that said information and content is exhaustive. Claims as to the exhaustive nature of said information and content are excluded. The information and content is only provided for advertising purposes and is non-binding. No explicit or implied warranties or guarantees are made. The container displayed only represents a sample of the entire fleet.

The following items are registered or unregistered service marks in the United States and/or foreign jurisdictions pursuant to applicable intellectual property law and are the property of Triton International Limited and its subsidiaries: Triton® and TAL®.



45ft High Cube Pallet Wide Dry Container



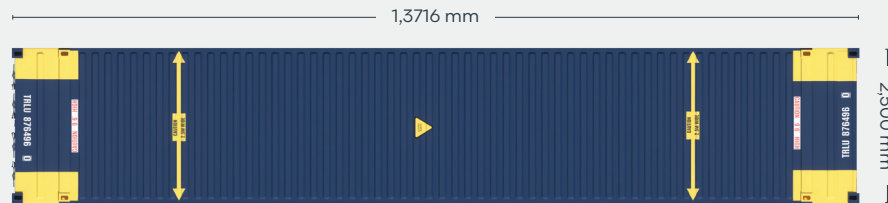
CLASSIFICATION

Lease

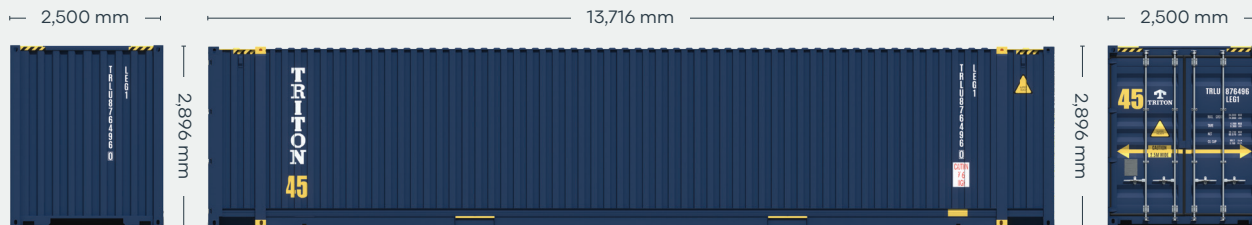
Available via Triton's global network of supply locations.

FEATURES

- It's distinctive shape allows for loading of 33 Euro Pallets, making it very competitive for Intermodal usage
- Low tare weight
- Fully intermodal: interchangeable on road, rail and sea
- The environment-friendly alternative to road transport (less CO₂ emission)
- Additional height and length provides extra internal cubic capacity, with a greater interior stacking capacity for your goods compared to a standard ISO container
- Manufactured with rust resistant corten steel
- Secure and weatherproof, with vents to allow airflow
- Strong steel construction to protect for impact damages
- Superior paint systems to protect from sea water and other environmental exposure
- Triton's industry leading new production testing and inspection criteria ensures the highest quality container
- Backed up by Triton's global network of supply locations and dedicated leasing and support teams



CONTAINER ROOF



CONTAINER FRONT

CONTAINER SIDE

CONTAINER REAR

DIMENSIONS (METRIC/IMPERIAL)

EXTERNAL DIMENSIONS

| | | |
|---------------|-----------|----------|
| Length | 13,716 mm | 45' 0.0" |
| Width | 2,500 mm | 8' 2.4" |
| Height | 2,896 mm | 9' 6.0" |

INTERNAL DIMENSIONS

| | | |
|------------------------------------|-----------|----------|
| Length | 13,555 mm | 44' 5.7" |
| Width (Between side panels) | 2,444 mm | 8' 0.2" |
| Height | 2,695 mm | 8' 10.1" |

DOOR OPENING

| | | |
|---------------|----------|----------|
| Width | 2,416 mm | 7' 11.1" |
| Height | 2,638 mm | 8' 7.0" |

CAPACITY & WEIGHTS

| | | |
|------------------------------|---------------------|-----------------------|
| Inside Cubic Capacity | 89.3 m ³ | 3,154 ft ³ |
| Max Gross | 34,000 kg | 74,960 lbs |
| Payload | 29,550 kg | 65,150 lbs |
| Tare | 4,450 kg | 9,810 lbs |

NOTE: The dimensions and door openings of all containers correspond to ISO standards. However, due to production tolerances, a difference in measurement is possible.

DISCLAIMER: Every effort is made to ensure this information is accurate, however Triton does not assume any liability for the accuracy of the information and content provided in marketing or information materials, or for the consequences resulting from using the information and content provided. Triton does not guarantee or claim that said information and content is exhaustive. Claims as to the exhaustive nature of said information and content are excluded. The information and content is only provided for advertising purposes and is non-binding. No explicit or implied warranties or guarantees are made. The container displayed only represents a sample of the entire fleet.

The following items are registered or unregistered service marks in the United States and/or foreign jurisdictions pursuant to applicable intellectual property law and are the property of Triton International Limited and its subsidiaries: Triton® and TAL®.



CLASSIFICATION

For Sale: Used

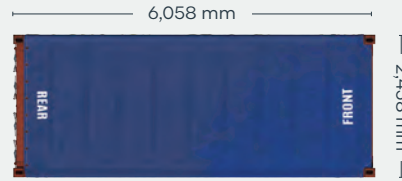
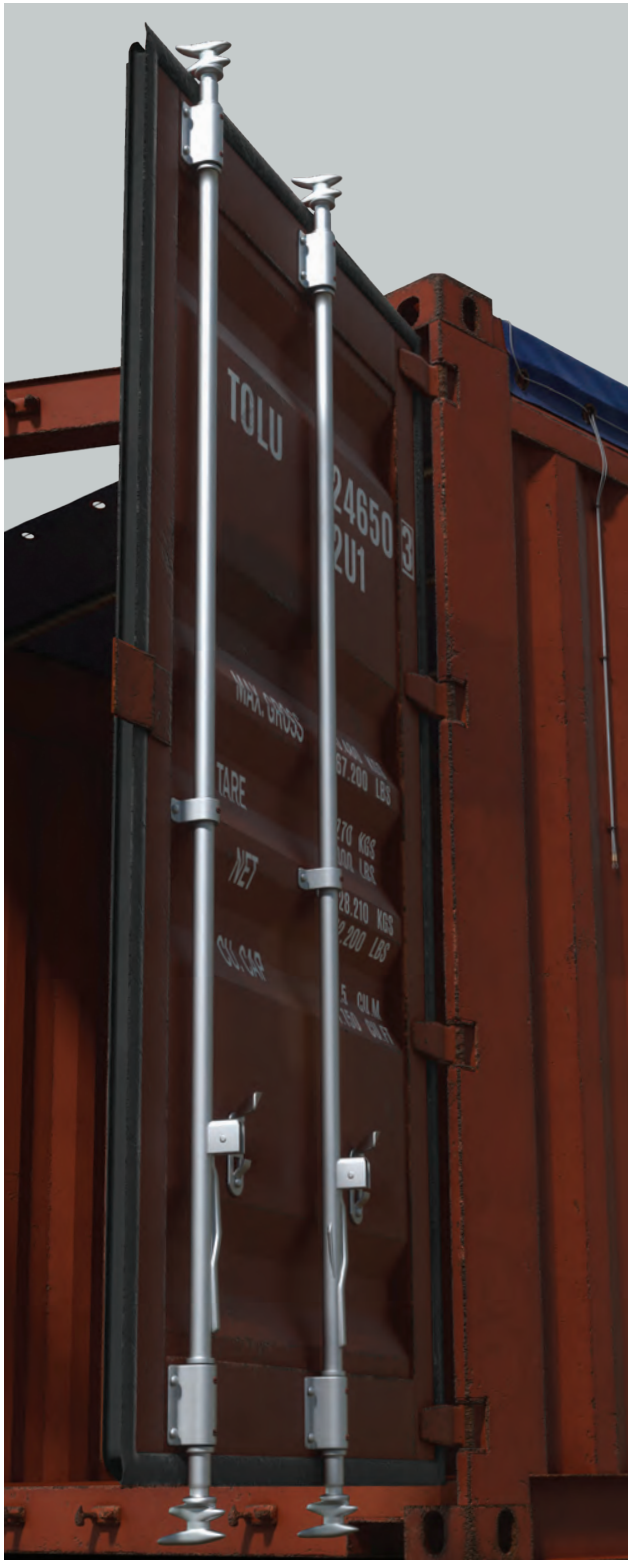
Available via Triton's global network of supply locations.

20ft Used Open Top Container



FEATURES

- Rugged corrugated steel exterior panels with a thick wooden floor
- Designed for cargos that require special loading dimensions
- Removable roof bows and heavy duty tarpaulin
- Swivel-out door header
- 14 gauge corrugated steel sides and 14 gauge locking steel double-end swing doors
- 1½" thick marine plywood floors, forklift tested to 16,000 lbs per 44 square inches
- Tie down steel lashing rings, 4000 lbs. cap. each
- (2) way laden fork lift pockets
- Security roof tarpaulin locking cable
- Backed up by Triton's global network of supply locations and dedicated sales and support teams
- Available globally



CONTAINER ROOF



CONTAINER FRONT

CONTAINER SIDE

CONTAINER REAR

DIMENSIONS (METRIC/IMPERIAL)

EXTERNAL DIMENSIONS

| | | |
|---------------|----------|-----------|
| Length | 6,058 mm | 19' 10.5" |
| Width | 2,438 mm | 8' 0.0" |
| Height | 2,591 mm | 8' 6.0" |

INTERNAL DIMENSIONS

| | | |
|------------------------------------|----------|----------|
| Length | 5,895 mm | 19' 4.2" |
| Width (Between side panels) | 2,352 mm | 7' 8.6" |
| Height | 2,348 mm | 7' 8.4" |

DOOR OPENING

| | | |
|---------------|----------|---------|
| Width | 2,340 mm | 7' 8.1" |
| Height | 2,280 mm | 7' 5.8" |

CAPACITY & WEIGHTS

| | | |
|------------------------------|---------------------|-----------------------|
| Inside Cubic Capacity | 32.5 m ³ | 1,150 ft ³ |
| Max Gross | 30,480 kg | 67,200 lbs |
| Payload | 27,780–28,320 kg | 61,250–62,440 lbs |
| Tare | 2,160–2,700 kg | 4,760–5,950 lbs |

NOTE: The dimensions and door openings of all containers correspond to ISO standards. However, due to production tolerances, a difference in measurement is possible.

DISCLAIMER: Every effort is made to ensure this information is accurate, however Triton does not assume any liability for the accuracy of the information and content provided in marketing or information materials, or for the consequences resulting from using the information and content provided. Triton does not guarantee or claim that said information and content is exhaustive. Claims as to the exhaustive nature of said information and content are excluded. The information and content is only provided for advertising purposes and is non-binding. No explicit or implied warranties or guarantees are made. The container displayed only represents a sample of the entire fleet.

The following items are registered or unregistered service marks in the United States and/or foreign jurisdictions pursuant to applicable intellectual property law and are the property of Triton International Limited and its subsidiaries: Triton® and TAL®.



CLASSIFICATION

Lease

Available via Triton's global network of supply locations.

40ft Open Top Container

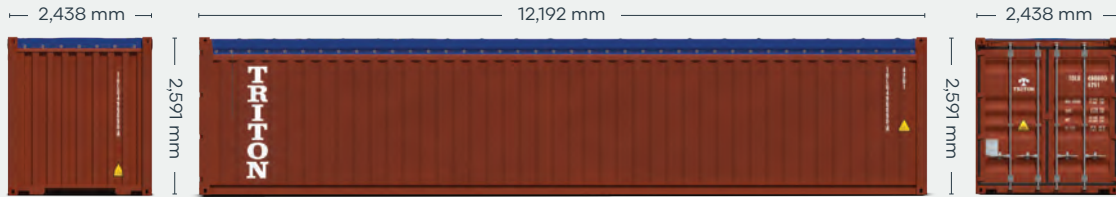


FEATURES

- Corrugated steel panels with strong wooden floor to protect the cargo
- Designed for cargos that require special loading dimensions
- Removable door header
- Removable roof bows and durable tarpaulin with customs approved cable to cover the topside.
- Two swingable doors with custom approved closures
- 1 1/8" thick marine wooden floors with center dividers
- Several lashing rings and bars inside the container to secure the cargo
- Triton's industry leading new production testing and inspection criteria ensures the highest quality container
- Backed up by Triton's global network of supply locations and dedicated leasing and support teams
- Available in the high demand hub ports
- Flexible lease terms to meet your company needs



CONTAINER ROOF



CONTAINER FRONT

CONTAINER SIDE

CONTAINER REAR

DIMENSIONS (METRIC/IMPERIAL)

EXTERNAL DIMENSIONS

| | | |
|---------------|-----------|----------|
| Length | 12,192 mm | 40' 0.0" |
| Width | 2,438 mm | 8' 0.0" |
| Height | 2,591 mm | 8' 6.0" |

INTERNAL DIMENSIONS

| | | |
|---------------|-----------|----------|
| Length | 12,032 mm | 39' 5.7" |
| Width | 2,352 mm | 7' 8.6" |
| Height | 2,348 mm | 7' 8.4" |

DOOR OPENING

| | | |
|---------------|----------|---------|
| Width | 2,340 mm | 7' 8.1" |
| Height | 2,280 mm | 7' 5.8" |

CAPACITY & WEIGHTS

| | | |
|------------------------------|---------------------|----------------------|
| Inside Cubic Capacity | 65.9 m ³ | 2330 ft ³ |
| Max Gross | 32,500 kg | 71,650 lbs |
| Payload | 28,760 kg | 63,400 lbs |
| Tare | 3,740 kg | 8,250 lbs |

NOTE: The dimensions and door openings of all containers correspond to ISO standards. However, due to production tolerances, a difference in measurement is possible.

DISCLAIMER: Every effort is made to ensure this information is accurate, however Triton does not assume any liability for the accuracy of the information and content provided in marketing or information materials, or for the consequences resulting from using the information and content provided. Triton does not guarantee or claim that said information and content is exhaustive. Claims as to the exhaustive nature of said information and content are excluded. The information and content is only provided for advertising purposes and is non-binding. No explicit or implied warranties or guarantees are made. The container displayed only represents a sample of the entire fleet.

The following items are registered or unregistered service marks in the United States and/or foreign jurisdictions pursuant to applicable intellectual property law and are the property of Triton International Limited and its subsidiaries: Triton® and TAL®.



CLASSIFICATION

For Sale: Used

Available via Triton's global network of supply locations.

20ft Used Refrigerated Container



FEATURES

- Available in a range of conditions to suit all needs
- Refrigerated and insulated shipping containers
- Ideal for on-site temperature controlled storage
- Designed for safe transportation of perishable food, beverages and temperature sensitive cargo
- State-of-the-art design makes units highly efficient
- Most units have stainless steel lined interiors and T-bar flooring
- Most machinery comes with 3 Phase power and CFC friendly refrigerant
- Backed up by Triton's global network of supply locations and dedicated sales and support teams
- Available globally



REEFER ROOF

2,438 mm



REEFER FRONT

6,058 mm



REEFER SIDE

2,438 mm



REEFER REAR

DIMENSIONS (METRIC/IMPERIAL)

EXTERNAL DIMENSIONS

| | | |
|---------------|----------|-----------|
| Length | 6,058 mm | 19' 10.5" |
| Width | 2,438 mm | 8' 0.0" |
| Height | 2,591 mm | 8' 6.0" |

INTERNAL DIMENSIONS

| | | |
|---------------|----------|-----------|
| Length | 5,454 mm | 17' 10.7" |
| Width | 2,290 mm | 7' 6.2" |
| Height | 2,276 mm | 7' 5.6" |

DOOR OPENING

| | | |
|---------------|----------|---------|
| Width | 2,294 mm | 7' 6.3" |
| Height | 2,264 mm | 7' 5.1" |

CAPACITY & WEIGHTS

| | | |
|------------------------------|---------------------|----------------------|
| Inside Cubic Capacity | 28.4 m ³ | 1003 ft ³ |
| Max Gross | 30,480 kg | 67,200 lbs |
| Payload | 27,650 kg | 60,960 lbs |
| Tare* | 2,830 kg | 6,240 lbs |

*Tare can vary slightly based on reefer machine type.

NOTE: The dimensions and door openings of all containers correspond to ISO standards. However, due to production tolerances, a difference in measurement is possible.

DISCLAIMER: Every effort is made to ensure this information is accurate, however Triton does not assume any liability for the accuracy of the information and content provided in marketing or information materials, or for the consequences resulting from using the information and content provided. Triton does not guarantee or claim that said information and content is exhaustive. Claims as to the exhaustive nature of said information and content are excluded. The information and content is only provided for advertising purposes and is non-binding. No explicit or implied warranties or guarantees are made. The container displayed only represents a sample of the entire fleet.

The following items are registered or unregistered service marks in the United States and/or foreign jurisdictions pursuant to applicable intellectual property law and are the property of Triton International Limited and its subsidiaries: Triton® and TAL®.



40ft High Cube Refrigerated Container



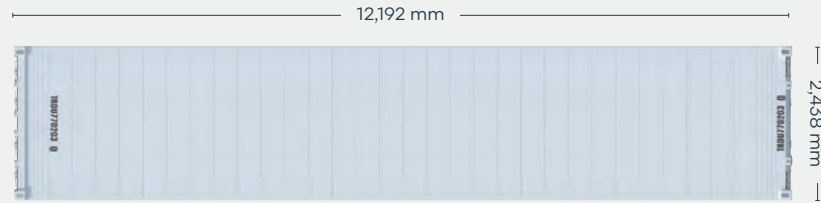
CLASSIFICATION

Lease

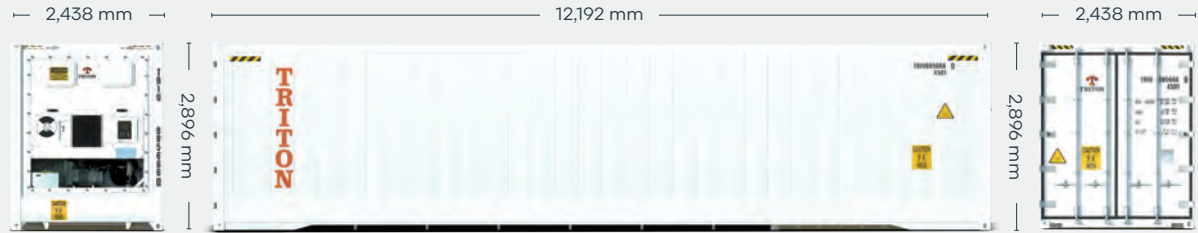
Available via Triton's global network of supply locations.

FEATURES

- Additional height provides extra internal cubic capacity, which means greater interior stacking capacity for your goods
- Designed for safe transportation of temperature sensitive cargo and frozen and perishable goods. (Food-grade approved)
- Ideal for on-site temperature controlled storage
- Strong, robust, insulated and repair friendly
- State-of-the-art design and low power consumption makes units highly efficient
- Standard features: HGSS roof end panels, T-bar flooring and interior aluminum scuff lining
- Provisioned for track & trace feature
- Triton's industry leading new production testing and inspection criteria ensures the highest quality container
- Resistant to bacteria
- Low heat leakage values
- Low GWP refrigerants compatible
- Can be ordered with Carrier, Starcool, Daikin or Thermo King machinery, with 3 Phase Power. These leading brands offer worldwide availability for parts and service
- Backed up by Triton's global network of supply locations and dedicated leasing and support teams
- Available globally



REEFER ROOF



REEFER FRONT

REEFER SIDE

REEFER REAR

DIMENSIONS (METRIC/IMPERIAL)

EXTERNAL DIMENSIONS

| | | |
|---------------|-----------|----------|
| Length | 12,192 mm | 40' 0.0" |
| Width | 2,438 mm | 8' 0.0" |
| Height | 2,896 mm | 9' 6.0" |

INTERNAL DIMENSIONS

| | | |
|---------------|------------|----------|
| Length | 11,588 mm | 38' 0.2" |
| Width | 2,290 mm | 7' 6.2" |
| Height | 2,547.5 mm | 8' 4.3" |

DOOR OPENING

| | | |
|---------------|----------|---------|
| Width | 2,294 mm | 7' 6.3" |
| Height | 2,569 mm | 8' 5.1" |

CAPACITY & WEIGHTS

| | | |
|------------------------------|---------------------|-----------------------|
| Inside Cubic Capacity | 67.6 m ³ | 2,387 ft ³ |
| Max Gross | 35,000 kg | 77,160 lbs |
| Payload | 30,440 kg | 67,110 lbs |
| Tare* | 4,560 kg | 10,050 lbs |

*Tare can vary slightly based on reefer machine type.

NOTE: The dimensions and door openings of all containers correspond to ISO standards. However, due to production tolerances, a difference in measurement is possible.

DISCLAIMER: Every effort is made to ensure this information is accurate, however Triton does not assume any liability for the accuracy of the information and content provided in marketing or information materials, or for the consequences resulting from using the information and content provided. Triton does not guarantee or claim that said information and content is exhaustive. Claims as to the exhaustive nature of said information and content are excluded. The information and content is only provided for advertising purposes and is non-binding. No explicit or implied warranties or guarantees are made. The container displayed only represents a sample of the entire fleet.

The following items are registered or unregistered service marks in the United States and/or foreign jurisdictions pursuant to applicable intellectual property law and are the property of Triton International Limited and its subsidiaries: Triton® and TAL®.



CLASSIFICATION

For Sale: Used

Available via Triton's global network of supply locations.

45ft Used High Cube Pallet Wide Refrigerated Container



FEATURES

- Available in a range of conditions to suit all needs
- Additional height and length provides extra internal cubic capacity, which means greater interior stacking capacity for your goods
- Refrigerated and insulated shipping containers
- Designed for safe transportation of perishable food, beverages and temperature sensitive cargo
- Ideal for on-site temperature controlled storage
- State of the art design makes units highly efficient
- Most units have stainless steel lined interiors and T-bar flooring
- Most machinery comes with 3 Phase power and CFC friendly refrigerant
- Backed up by Triton's global network of supply locations and dedicated sales and support teams
- Available globally



REEFER ROOF



REEFER FRONT

REEFER SIDE

REEFER REAR

DIMENSIONS (METRIC/IMPERIAL)

EXTERNAL DIMENSIONS

| | | |
|---------------|-----------|----------|
| Length | 13,813 mm | 45' 0.0" |
| Width | 2,550 mm | 8' 3.6" |
| Height | 2,900 mm | 9' 5.1" |

DOOR OPENING

| | | |
|---------------|----------|---------|
| Width | 2,440 mm | 8' 0.0" |
| Height | 2,570 mm | 8' 4.3" |

INTERNAL DIMENSIONS

| | | |
|---------------|-----------|----------|
| Length | 13,261 mm | 43' 0.0" |
| Width | 2,440 mm | 8' 0.0" |
| Height | 2,570 mm | 8' 4.3" |

CAPACITY & WEIGHTS

| | | |
|------------------------------|---------------------|-----------------------|
| Inside Cubic Capacity | 83.5 m ³ | 2,949 ft ³ |
| Max Gross | 35,000 kg | 77,160 lbs |
| Payload | 28,920 kg | 63,760 lbs |
| Tare* | 6,080 kg | 13,400 lbs |

*Tare can vary slightly based on reefer machine type.

NOTE: The dimensions and door openings of all containers correspond to ISO standards. However, due to production tolerances, a difference in measurement is possible.

DISCLAIMER: Every effort is made to ensure this information is accurate, however Triton does not assume any liability for the accuracy of the information and content provided in marketing or information materials, or for the consequences resulting from using the information and content provided. Triton does not guarantee or claim that said information and content is exhaustive. Claims as to the exhaustive nature of said information and content are excluded. The information and content is only provided for advertising purposes and is non-binding. No explicit or implied warranties or guarantees are made. The container displayed only represents a sample of the entire fleet.

The following items are registered or unregistered service marks in the United States and/or foreign jurisdictions pursuant to applicable intellectual property law and are the property of Triton International Limited and its subsidiaries: Triton® and TAL®.



20ft Flush Folding Flatracks



CLASSIFICATION

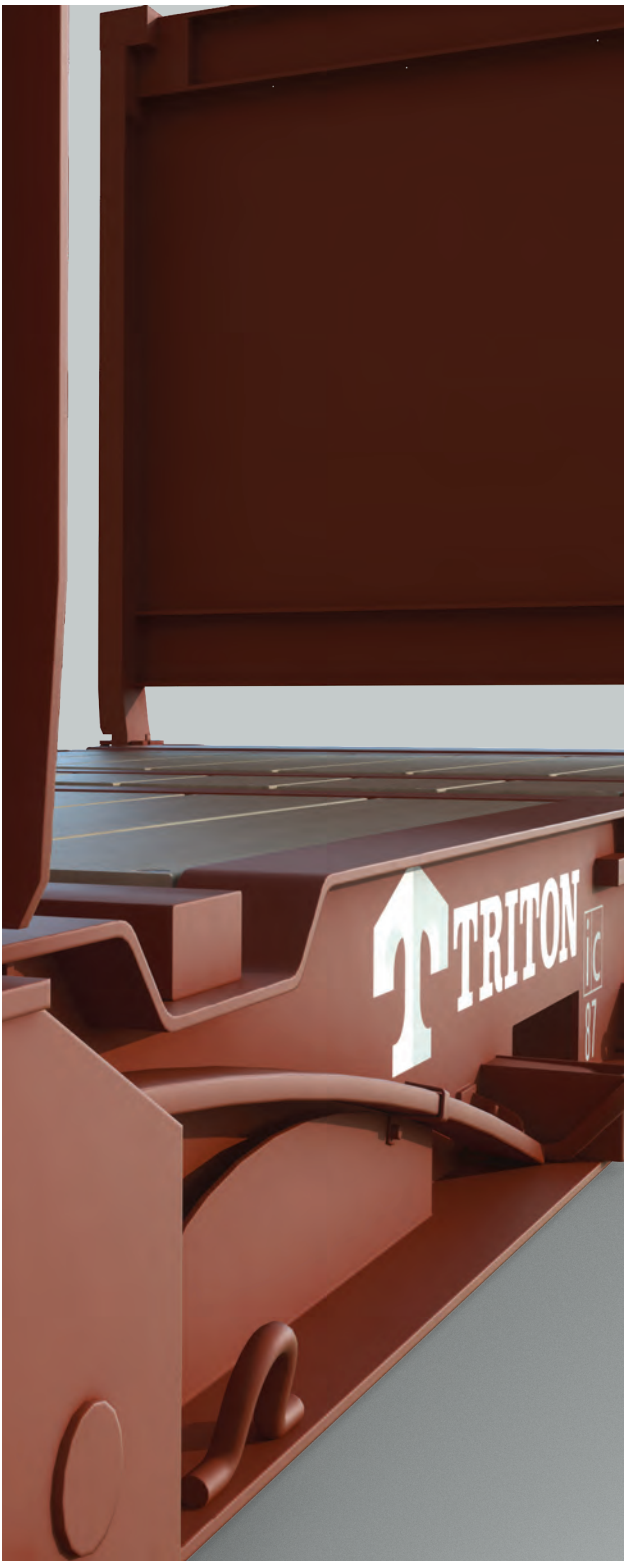
Lease

Available via Triton's global network of supply locations.



FEATURES

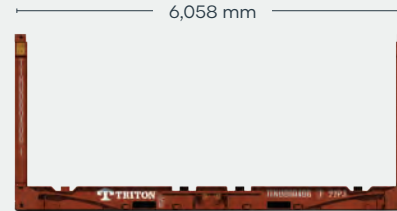
- Built to carry heavy or oversized cargoes
- Great for specialized shipments of steel, pipes, drums and machinery
- Forklift pockets for easy empty handling
- Heavy duty steel frames and thick plank floors and lashing rings all around
- With flush folding end frames to allow for efficient stacking and repositioning
- Triton's industry leading new production testing and inspection criteria ensures the highest quality container
- Available in the high demand hub ports
- Backed up by Triton's global network of supply locations and dedicated leasing and support teams
- Flexible lease terms to meet your company needs



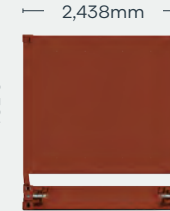
FLATRACK TOP



FLATRACK FRONT



FLATRACK SIDE



FLATRACK REAR

DIMENSIONS (METRIC/IMPERIAL)

EXTERNAL DIMENSIONS

| | | |
|-------------------------------------|----------|-----------|
| Length (Base bottom casting) | 6,058 mm | 19' 10.5" |
| Width (Base bottom casting) | 2,438 mm | 8' 0.0" |
| Height (End frame up) | 2,591 mm | 8' 6.0" |
| Height (End frame down) | 370 mm | 1' 2.6" |

INTERNAL DIMENSIONS

| | | |
|---|----------|----------|
| Length (Between end panels) | 6,038 mm | 19' 9.7" |
| Width (Over bottom side rail) | 2,194 mm | 7' 2.4" |
| Height (Side rail to top castings) | 2,233 mm | 7' 3.9" |

CAPACITY & WEIGHTS

| | | |
|------------------|-----------|------------|
| Max Gross | 34,000 kg | 74,960 lbs |
| Payload | 31,200 kg | 68,790 lbs |
| Tare | 2,800 kg | 6,170 lbs |

NOTE: The dimensions of containers correspond to ISO standards.

However, due to production tolerances, a difference in measurement is possible.

DISCLAIMER: Every effort is made to ensure this information is accurate, however Triton does not assume any liability for the accuracy of the information and content provided in marketing or information materials, or for the consequences resulting from using the information and content provided. Triton does not guarantee or claim that said information and content is exhaustive. Claims as to the exhaustive nature of said information and content are excluded. The information and content is only provided for advertising purposes and is non-binding. No explicit or implied warranties or guarantees are made. The container displayed only represents a sample of the entire fleet.

The following items are registered or unregistered service marks in the United States and/or foreign jurisdictions pursuant to applicable intellectual property law and are the property of Triton International Limited and its subsidiaries: Triton® and TAL®.



CLASSIFICATION

For Sale: Used

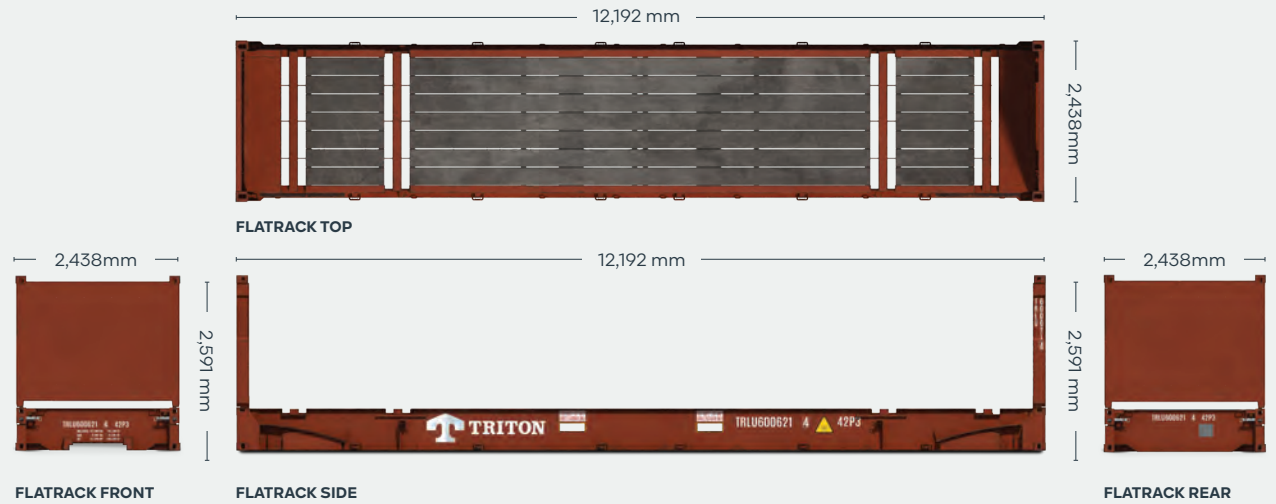
Available via Triton's global network of supply locations.

40ft Used Flush Folding Flatracks



FEATURES

- Built to carry heavy or out of gauge cargoes
- Heavy duty steel frames and thick plank floors
- Backed up by Triton's global network of supply locations and dedicated sales and support teams
- Great for specialized shipments of coiled steel, drums and machinery
- Many with flush folding end frames to allow for efficient stacking
- Available globally



DIMENSIONS (METRIC/IMPERIAL)

EXTERNAL DIMENSIONS

| | | |
|-------------------------------------|-----------|----------|
| Length (Base bottom casting) | 12,192 mm | 40' 0.0" |
| Width (Base bottom casting) | 2,438 mm | 8' 0.0" |
| Height (End frame up) | 2,591 mm | 8' 6.0" |
| Height (End frame down) | 648 mm | 2' 1.5" |

INTERNAL DIMENSIONS

| | | |
|---|-----------|-----------|
| Length (Between end panels) | 12,182 mm | 39' 11.6" |
| Width (Over bottom side rail) | 2,374 mm | 7' 9.5" |
| Height (Side rail to top castings) | 1,959 mm | 6' 5.1" |

CAPACITY & WEIGHTS

| | |
|------------------|--|
| Max Gross | 45,000, 50,000 or 52,500kg 99,210, 110,230 or 115,740 lbs |
| Payload | 39,200 – 47,520kg 86,421 – 104,764 lbs |
| Tare | 4,780 kg – 5,800 kg 10,538 lbs – 12,787 lbs |

NOTE: The dimensions of containers correspond to ISO standards.

However, due to production tolerances, a difference in measurement is possible.

DISCLAIMER: Every effort is made to ensure this information is accurate, however Triton does not assume any liability for the accuracy of the information and content provided in marketing or information materials, or for the consequences resulting from using the information and content provided. Triton does not guarantee or claim that said information and content is exhaustive. Claims as to the exhaustive nature of said information and content are excluded. The information and content is only provided for advertising purposes and is non-binding. No explicit or implied warranties or guarantees are made. The container displayed only represents a sample of the entire fleet.

The following items are registered or unregistered service marks in the United States and/or foreign jurisdictions pursuant to applicable intellectual property law and are the property of Triton International Limited and its subsidiaries: Triton® and TAL®.

HERE. THERE. EVERYWHERE

We supply the world

Triton is the largest lessor of intermodal containers in the world with over 7 million TEU of containers. Our services are available in 89 countries around the globe. So, no matter where you need containers, we'll have them nearby. To find your nearest Triton Container Sales manager visit www.tritoncontainer.com.



**Global inventory of
cargoworthy containers
for lease and sale.**



**Unrivalled container
supply at competitive
prices.**



**Outstanding and
highly responsive
customer services.**



**Global network of 20 offices
and 3 independent agencies
across 16 countries.**



**Equipment
built to the
highest quality.**



**Our size, strength and reliability
make us the go-to supplier of
intermodal shipping containers.**



TRITON

We're the biggest for a reason, contact our friendly experts and experience Triton's world-leading service and cost savings today. Imagine what we can do together.

www.tritoncontainer.com