



CLASSIFICATION

Lease

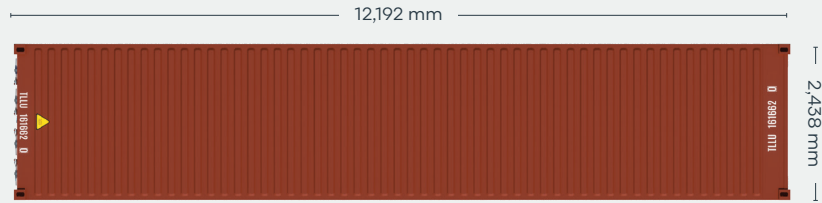
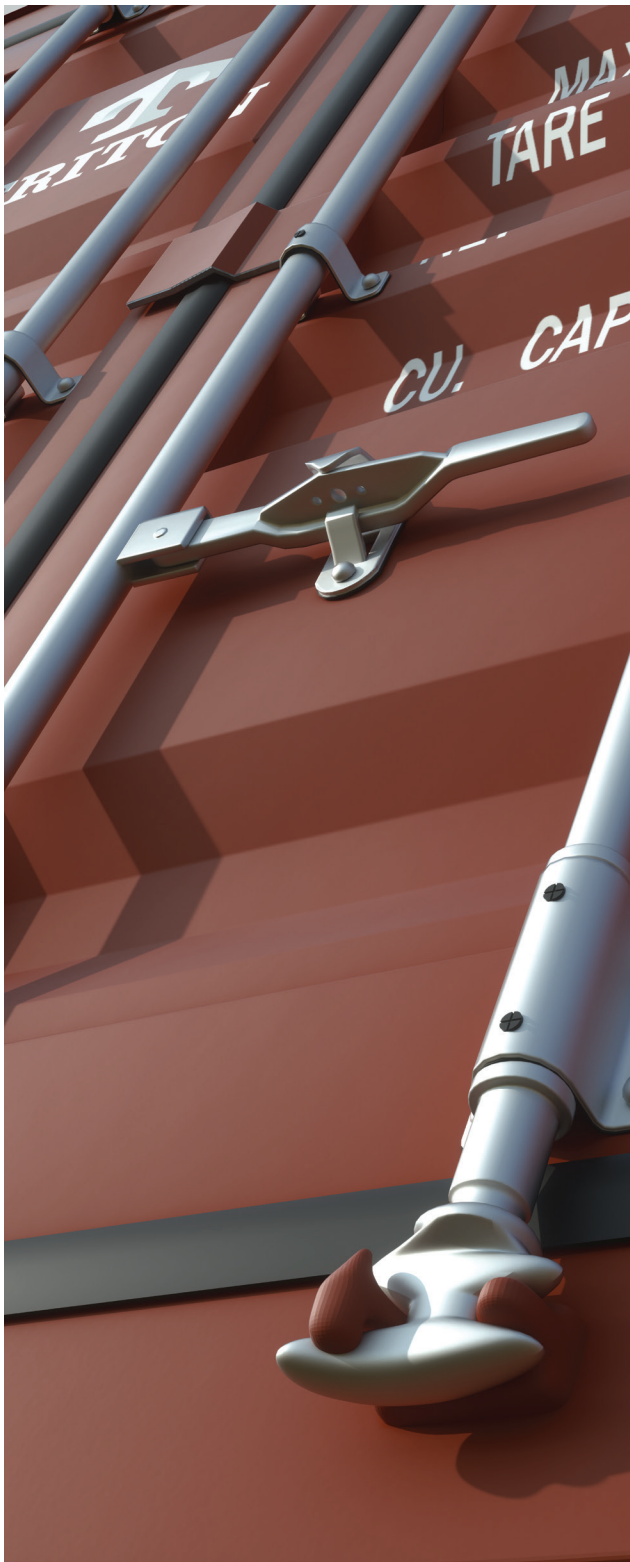
Available via Triton's global network of supply locations.

40ft Dry Container

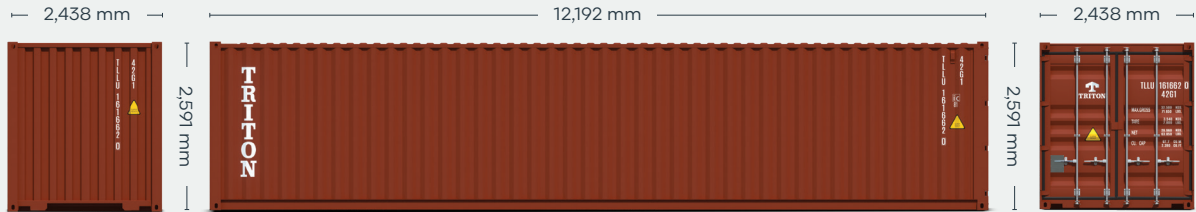


FEATURES

- Manufactured with rust resistant corten steel
- Secure and weatherproof, with vents to allow airflow
- Resistant to damage and corrosion
- Superior paint systems
- Triton's industry leading new production testing and inspection criteria ensures the highest quality container
- Incredibly versatile
- Backed up by Triton's global network of supply locations and dedicated leasing and support teams
- Available globally
- IICL-6 repair criteria saves cost at off-hire
- Damage Protection Plan available to reduce costs and time at off-hire
- Flexible lease terms to meet your company needs



CONTAINER ROOF



CONTAINER FRONT

CONTAINER SIDE

CONTAINER REAR

DIMENSIONS (METRIC/IMPERIAL)

EXTERNAL DIMENSIONS

Length	12,192 mm	40' 0.0"
Width	2,438 mm	8' 0.0"
Height	2,591 mm	8' 6.0"

INTERNAL DIMENSIONS

Length	12,032 mm	39' 5.7"
Width	2,352 mm	7' 8.6"
Height	2,393 mm	7' 10.2"

DOOR OPENING

Width	2,340 mm	7' 8.1"
Height	2,280 mm	7' 5.8"

CAPACITY & WEIGHTS

Inside Cubic Capacity	67.7 m ³	2,390 ft ³
Max Gross	32,500 kg	71,650 lbs
Payload	28,960 kg	63,850 lbs
Tare	3,540 kg	7,800 lbs

NOTE: The dimensions and door openings of all containers correspond to ISO standards. However, due to production tolerances, a difference in measurement is possible.

DISCLAIMER: Every effort is made to ensure this information is accurate, however Triton does not assume any liability for the accuracy of the information and content provided in marketing or information materials, or for the consequences resulting from using the information and content provided. Triton does not guarantee or claim that said information and content is exhaustive. Claims as to the exhaustive nature of said information and content are excluded. The information and content is only provided for advertising purposes and is non-binding. No explicit or implied warranties or guarantees are made. The container displayed only represents a sample of the entire fleet.

The following items are registered or unregistered service marks in the United States and/or foreign jurisdictions pursuant to applicable intellectual property law and are the property of Triton International Limited and its subsidiaries: Triton® and TAL®.