



TRITON

OUR SECTORS

Mining

Efficiently and reliably
providing durable equipment.



OUR SECTORS – MINING

Efficient, reliable, and durable equipment

Our durable equipment is designed to withstand even the harshest climates and conditions. At Triton, we appreciate that mining is an asset-intensive industry that often utilizes bulky, oversized equipment, and big machinery.

We work with customers to overcome logistical challenges by leasing and selling a wide range of Flatracks, Tank Containers, Open Top Containers, and Dry Containers. Our customers' interests are at the heart of everything we do. The Triton Container Sales team includes 45 sales and service specialists, supported by our best-in-class operational infrastructure. This experienced team sells new and used containers to companies operating in the mining sector for storage and one-way shipment. Additionally, our global network can assist in selling containers when they are discharged at their final destination.

Buy or lease Dry Containers

Triton Dry Containers are frequently utilized in remote mining locations to deliver mission-critical supplies. Upon arrival, they are often repurposed as cost-effective storage or facilities.

Their simple design makes them incredibly versatile, and when purchased, customers can modify them into contemporary spaces by inserting air conditioning, plumbing, and partitions to create rooms.

Buy or lease ISO Tank Containers

ISO Tank Containers are used as a safe, flexible, and cost-effective means to ship and store the chemicals used in the mining process directly to where they are needed, including, but not limited to, the mine itself.

Buy or lease Refrigerated Containers

Constructed to comply with mine site and offshore safety standards, Triton Refrigerated Containers will keep food and heat-sensitive items safe and at consistent temperatures at all times.

PLEASE NOTE: The following pages showcase a small sample of products in the Triton global inventory. We stock a wide range of products for lease and sale in various conditions. Get in touch with your local Triton representative for more information.



20ft Dry Container



CLASSIFICATION

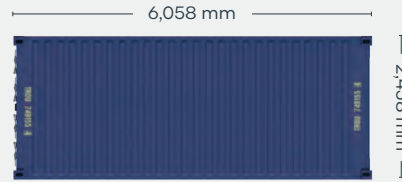
For Sale: New

Available via Triton's global network of supply locations.



FEATURES

- Manufactured with rust resistant corten steel
- Secure and weatherproof, with vents to allow airflow
- Resistant to damage and corrosion
- Superior paint systems
- Great options including 80 micron floor coating, lock boxes, waist-high door locking handles
- Incredibly versatile and suitable for customers to modify into a wide range of applications
- Advance orders in your preferred color (minimum volume required)
- Triton's industry leading new production testing and inspection criteria ensures the highest quality container
- Moved from factory to most major ports in the world
- Backed up by Triton's global network of supply locations and dedicated sales and support teams
- Available globally



CONTAINER ROOF



CONTAINER FRONT

CONTAINER SIDE

CONTAINER REAR

DIMENSIONS (METRIC/IMPERIAL)

EXTERNAL DIMENSIONS

Length	6,058 mm	19' 10.5"
Width	2,438 mm	8' 0.0"
Height	2,591 mm	8' 6.0"

INTERNAL DIMENSIONS

Length	5,898 mm	19' 4.2"
Width	2,352 mm	7' 8.6"
Height	2,393 mm	7' 10.2"

DOOR OPENING

Width	2,343 mm	7' 8.2"
Height	2,280 mm	7' 5.8"

CAPACITY & WEIGHTS

Inside Cubic Capacity	33 m ³	1165.4 ft ³
Max Gross	30,480 kg	67,200 lbs
Payload	28,450 kg	62,721 lbs
Tare	2,030 kg	4475 lbs

NOTE: The dimensions and door openings of all containers correspond to ISO standards. However, due to production tolerances, a difference in measurement is possible.

DISCLAIMER: Every effort is made to ensure this information is accurate, however Triton does not assume any liability for the accuracy of the information and content provided in marketing or information materials, or for the consequences resulting from using the information and content provided. Triton does not guarantee or claim that said information and content is exhaustive. Claims as to the exhaustive nature of said information and content are excluded. The information and content is only provided for advertising purposes and is non-binding. No explicit or implied warranties or guarantees are made. The container displayed only represents a sample of the entire fleet.

The following items are registered or unregistered service marks in the United States and/or foreign jurisdictions pursuant to applicable intellectual property law and are the property of Triton International Limited and its subsidiaries: Triton® and TAL®.



CLASSIFICATION

For Sale: Used

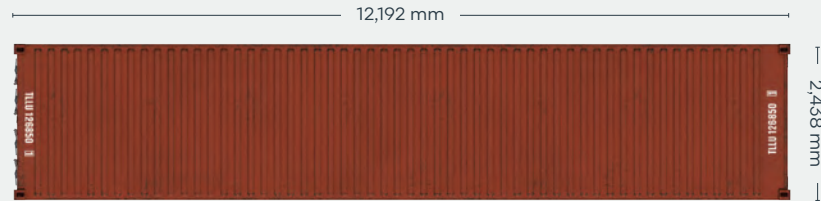
Available via Triton's global network of supply locations.

40ft Used Dry Container



FEATURES

- Available in a range of conditions to suit all needs, from cargo transportation to secure domestic storage
- Generally 11-15 years old when retired from service
- Constructed from rugged corten steel
- Durable and secure, with vents to allow airflow
- Resistant to damage and corrosion
- A variety of options available
- Incredibly versatile and suitable for customers to modify into a wide range of applications
- Available globally
- Backed up by Triton's global network of supply locations and dedicated sales and support teams
- Also available for direct delivery to buyer's facilities, providing significant cost savings on transport



CONTAINER ROOF



CONTAINER FRONT

CONTAINER SIDE

CONTAINER REAR

DIMENSIONS (METRIC/IMPERIAL)

EXTERNAL DIMENSIONS

Length	12,192 mm	40' 0.0"
Width	2,438 mm	8' 0.0"
Height	2,591 mm	8' 6.0"

INTERNAL DIMENSIONS

Length	12,032 mm	39' 5.7"
Width	2,352 mm	7' 8.6"
Height	2,393 mm	7' 10.2"

DOOR OPENING

Width	2,340 mm	7' 8.1"
Height	2,280 mm	7' 5.8"

CAPACITY & WEIGHTS

Inside Cubic Capacity	67.7 m ³	2390 ft ³
Max Gross	30,480–32,500 kg	67,200–71,650 lbs
Payload	26,980–29,070 kg	59,484–64,090 lbs
Tare	3,430–3,920 kg	7,560–8,640 lbs

NOTE: The dimensions and door openings of all containers correspond to ISO standards. However, due to production tolerances, a difference in measurement is possible.

DISCLAIMER: Every effort is made to ensure this information is accurate, however Triton does not assume any liability for the accuracy of the information and content provided in marketing or information materials, or for the consequences resulting from using the information and content provided. Triton does not guarantee or claim that said information and content is exhaustive. Claims as to the exhaustive nature of said information and content are excluded. The information and content is only provided for advertising purposes and is non-binding. No explicit or implied warranties or guarantees are made. The container displayed only represents a sample of the entire fleet.

The following items are registered or unregistered service marks in the United States and/or foreign jurisdictions pursuant to applicable intellectual property law and are the property of Triton International Limited and its subsidiaries: Triton® and TAL®.



20ft Used Open Top Container



CLASSIFICATION

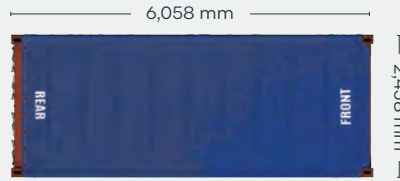
For Sale: Used

Available via Triton's global network of supply locations.



FEATURES

- Rugged corrugated steel exterior panels with a thick wooden floor
- Designed for cargos that require special loading dimensions
- Removable roof bows and heavy duty tarpaulin
- Swivel-out door header
- 14 gauge corrugated steel sides and 14 gauge locking steel double-end swing doors
- 1½" thick marine plywood floors, forklift tested to 16,000 lbs per 44 square inches
- Tie down steel lashing rings, 4000 lbs. cap. each
- (2) way laden fork lift pockets
- Security roof tarpaulin locking cable
- Backed up by Triton's global network of supply locations and dedicated sales and support teams
- Available globally



CONTAINER ROOF



CONTAINER FRONT

CONTAINER SIDE

CONTAINER REAR

DIMENSIONS (METRIC/IMPERIAL)

EXTERNAL DIMENSIONS

Length	6,058 mm	19' 10.5"
Width	2,438 mm	8' 0.0"
Height	2,591 mm	8' 6.0"

INTERNAL DIMENSIONS

Length	5,895 mm	19' 4.2"
Width (Between side panels)	2,352 mm	7' 8.6"
Height	2,348 mm	7' 8.4"

DOOR OPENING

Width	2,340 mm	7' 8.1"
Height	2,280 mm	7' 5.8"

CAPACITY & WEIGHTS

Inside Cubic Capacity	32.5 m ³	1,150 ft ³
Max Gross	30,480 kg	67,200 lbs
Payload	27,780–28,320 kg	61,250–62,440 lbs
Tare	2,160–2,700 kg	4,760–5,950 lbs

NOTE: The dimensions and door openings of all containers correspond to ISO standards. However, due to production tolerances, a difference in measurement is possible.

DISCLAIMER: Every effort is made to ensure this information is accurate, however Triton does not assume any liability for the accuracy of the information and content provided in marketing or information materials, or for the consequences resulting from using the information and content provided. Triton does not guarantee or claim that said information and content is exhaustive. Claims as to the exhaustive nature of said information and content are excluded. The information and content is only provided for advertising purposes and is non-binding. No explicit or implied warranties or guarantees are made. The container displayed only represents a sample of the entire fleet.

The following items are registered or unregistered service marks in the United States and/or foreign jurisdictions pursuant to applicable intellectual property law and are the property of Triton International Limited and its subsidiaries: Triton® and TAL®.



CLASSIFICATION

Lease

Available via Triton's global network of supply locations.

40ft Open Top Container

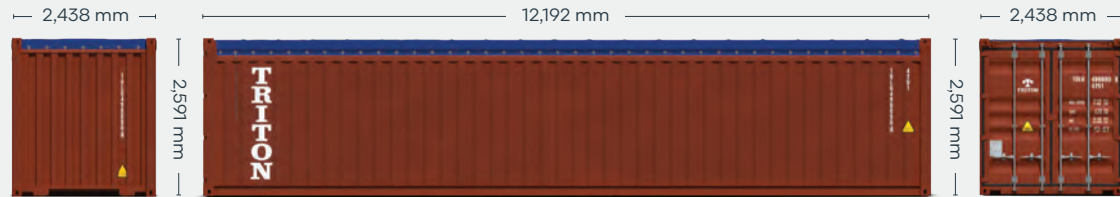


FEATURES

- Corrugated steel panels with strong wooden floor to protect the cargo
- Designed for cargos that require special loading dimensions
- Removable door header
- Removable roof bows and durable tarpaulin with customs approved cable to cover the topside.
- Two swingable doors with custom approved closures
- 1 1/8" thick marine wooden floors with center dividers
- Several lashing rings and bars inside the container to secure the cargo
- Triton's industry leading new production testing and inspection criteria ensures the highest quality container
- Backed up by Triton's global network of supply locations and dedicated leasing and support teams
- Available in the high demand hub ports
- Flexible lease terms to meet your company needs



CONTAINER ROOF



CONTAINER FRONT

CONTAINER SIDE

CONTAINER REAR

DIMENSIONS (METRIC/IMPERIAL)

EXTERNAL DIMENSIONS

Length	12,192 mm	40' 0.0"
Width	2,438 mm	8' 0.0"
Height	2,591 mm	8' 6.0"

INTERNAL DIMENSIONS

Length	12,032 mm	39' 5.7"
Width	2,352 mm	7' 8.6"
Height	2,348 mm	7' 8.4"

DOOR OPENING

Width	2,340 mm	7' 8.1"
Height	2,280 mm	7' 5.8"

CAPACITY & WEIGHTS

Inside Cubic Capacity	65.9 m ³	2330 ft ³
Max Gross	32,500 kg	71,650 lbs
Payload	28,760 kg	63,400 lbs
Tare	3,740 kg	8,250 lbs

NOTE: The dimensions and door openings of all containers correspond to ISO standards. However, due to production tolerances, a difference in measurement is possible.

DISCLAIMER: Every effort is made to ensure this information is accurate, however Triton does not assume any liability for the accuracy of the information and content provided in marketing or information materials, or for the consequences resulting from using the information and content provided. Triton does not guarantee or claim that said information and content is exhaustive. Claims as to the exhaustive nature of said information and content are excluded. The information and content is only provided for advertising purposes and is non-binding. No explicit or implied warranties or guarantees are made. The container displayed only represents a sample of the entire fleet.

The following items are registered or unregistered service marks in the United States and/or foreign jurisdictions pursuant to applicable intellectual property law and are the property of Triton International Limited and its subsidiaries: Triton® and TAL®.



20ft Used Flush Folding Flatracks



CLASSIFICATION

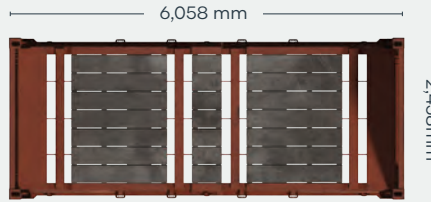
For Sale: Used

Available via Triton's global network of supply locations.



FEATURES

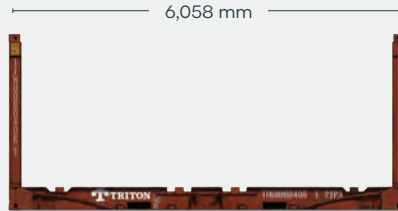
- Built to carry heavy or out of gauge cargoes
- Heavy duty steel frames and thick plank floors
- Backed up by Triton's global network of supply locations and dedicated sales and support teams
- Great for specialized shipments of coiled steel, drums and machinery
- Many with flush folding end frames to allow for efficient stacking
- Available globally



FLATRACK TOP



FLATRACK FRONT



FLATRACK SIDE



FLATRACK REAR

DIMENSIONS (METRIC/IMPERIAL)

EXTERNAL DIMENSIONS

Length (Base bottom casting)	6,058 mm	19' 10.5"
Width (Base bottom casting)	2,438 mm	8' 0.0"
Height (End frame up)	2,591 mm	8' 6.0"
Height (End frame down)	370 mm	1' 2.6"

INTERNAL DIMENSIONS

Length (Between end panels)	6,038 mm	19' 9.7"
Width (Over bottom side rail)	2,194 mm	7' 2.4"
Height (Side rail to top castings)	2,233 mm	7' 3.9"

CAPACITY & WEIGHTS

Max Gross	34,000 kg	74,960 lbs
Payload	31,110 – 31,350 kg	65,150 – 65,570 lbs
Tare	2,650 – 2,890 kg	9,390 – 9,810 lbs

NOTE: The dimensions of containers correspond to ISO standards.

However, due to production tolerances, a difference in measurement is possible.

DISCLAIMER: Every effort is made to ensure this information is accurate, however Triton does not assume any liability for the accuracy of the information and content provided in marketing or information materials, or for the consequences resulting from using the information and content provided. Triton does not guarantee or claim that said information and content is exhaustive. Claims as to the exhaustive nature of said information and content are excluded. The information and content is only provided for advertising purposes and is non-binding. No explicit or implied warranties or guarantees are made. The container displayed only represents a sample of the entire fleet.

The following items are registered or unregistered service marks in the United States and/or foreign jurisdictions pursuant to applicable intellectual property law and are the property of Triton International Limited and its subsidiaries: Triton® and TAL®.



CLASSIFICATION

Lease

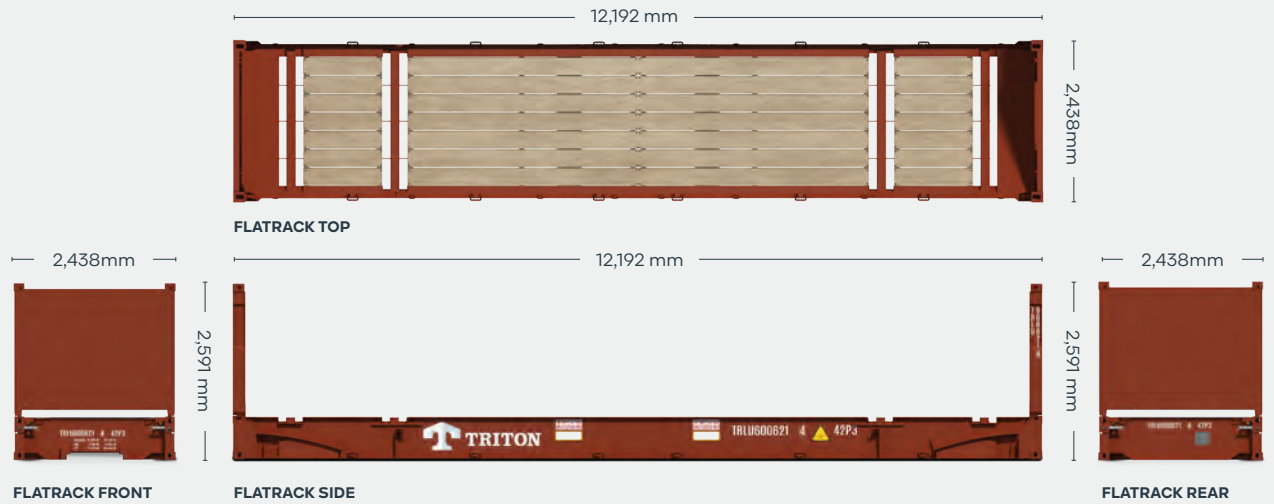
Available via Triton's global network of supply locations.

40ft Flush Folding Flatracks



FEATURES

- Built to carry heavy or oversized cargoes
- Great for specialized shipments of steel, pipes, drums and machinery
- Forklift pockets for easy empty handling
- Heavy duty steel frames and thick plank floors and lashing rings all around
- With flush folding end frames to allow for efficient stacking and repositioning
- Triton's industry leading new production testing and inspection criteria ensures the highest quality container
- Available in the high demand hub ports
- Backed up by Triton's global network of supply locations and dedicated leasing and support teams
- Flexible lease terms to meet your company needs



DIMENSIONS (METRIC/IMPERIAL)

EXTERNAL DIMENSIONS

Length (Base bottom casting)	12,192 mm	40' 0.0"
Width (Base bottom casting)	2,438 mm	8' 0.0"
Height (End frame up)	2,591 mm	8' 6.0"
Height (End frame down)	648 mm	2' 1.5"

INTERNAL DIMENSIONS

Length (Between end panels)	12,182 mm	39' 11.6"
Width (Over bottom side rail)	2,374 mm	7' 9.5"
Height (Side rail to top castings)	1,959 mm	6' 5.1"

CAPACITY & WEIGHTS

Max Gross	52,500 kg	115,740 lbs
Payload	47,370 kg	104,430 lbs
Tare	5,130 kg	11,310 lbs

NOTE: The dimensions of containers correspond to ISO standards.

However, due to production tolerances, a difference in measurement is possible.

DISCLAIMER: Every effort is made to ensure this information is accurate, however Triton does not assume any liability for the accuracy of the information and content provided in marketing or information materials, or for the consequences resulting from using the information and content provided. Triton does not guarantee or claim that said information and content is exhaustive. Claims as to the exhaustive nature of said information and content are excluded. The information and content is only provided for advertising purposes and is non-binding. No explicit or implied warranties or guarantees are made. The container displayed only represents a sample of the entire fleet.

The following items are registered or unregistered service marks in the United States and/or foreign jurisdictions pursuant to applicable intellectual property law and are the property of Triton International Limited and its subsidiaries: Triton® and TAL®.



ISO Fluid Tank Container



CLASSIFICATION

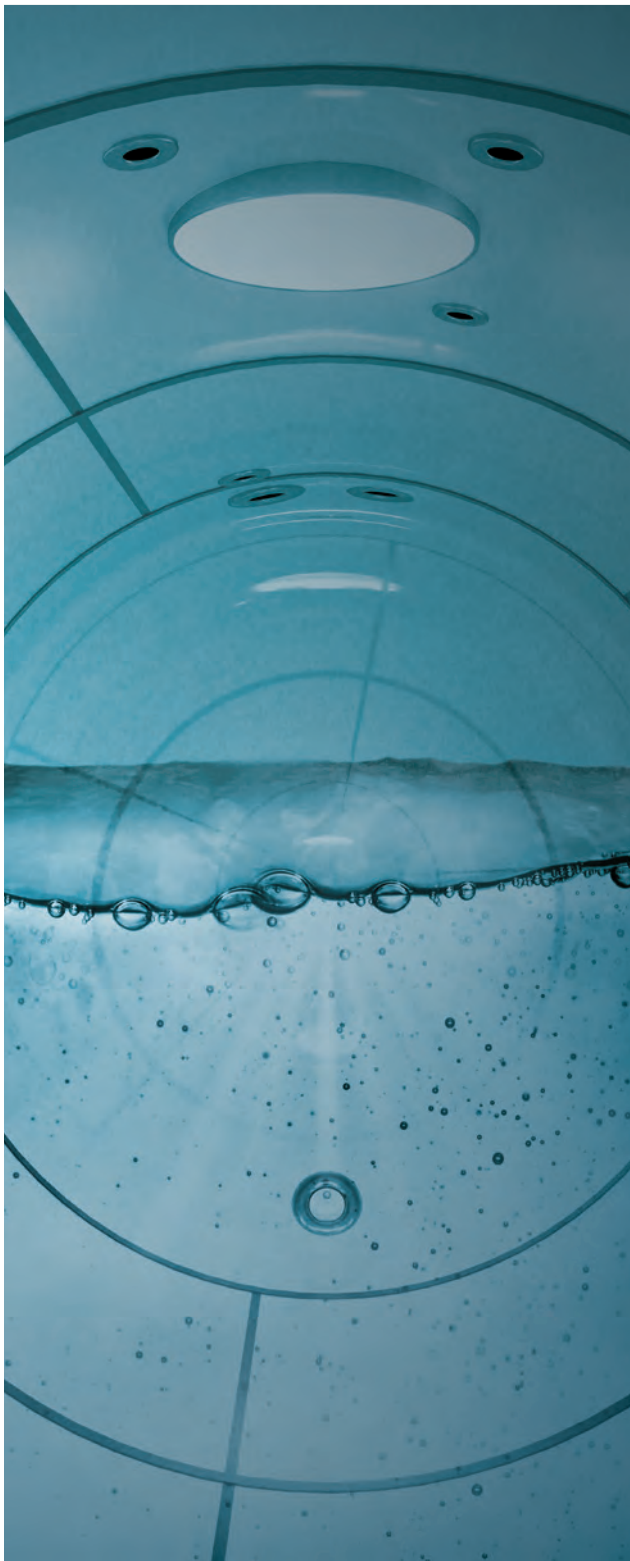
Lease

Available via Triton's global network of supply locations.



FEATURES

- UN portable tank: Type T11 and T14 available
- Capacities ranging from 21000l to 35000l
- Approved for ADR/RID/IMDG transportation
- Suitable for the carriage of most bulk liquids
- General specs include a high quality stainless steel tank barrel
- Full frame type design with B-style walkway
- Internationally recognized fittings
- Insulation with steam heating capability
- Rigorous quality control of our 3rd party production facilities
- Backed up by Triton's global network of supply locations and dedicated leasing and support teams
- Available globally
- Flexible lease terms to meet your company needs



TANK TOP



TANK FRONT

TANK SIDE

TANK REAR

DIMENSIONS (METRIC/IMPERIAL)

FRAME DIMENSIONS (20' Equivalent)

Length	6,058 mm	19' 10.5"
Width	2,438 mm	8' 0.0"
Height	2,591 mm	8' 6.0"

WEIGHT, PRESSURE & TEMPERATURE

Maximum Gross Weight	36,000 kg
Tare Weight	3,710 kg
Payload	32,290 kg
Maximum Allowable Working Pressure	4.00 bar
Design Temperature (frame & tank)	-40°C to +130°C

OPTIONS

AVAILABLE ISO TANKS T11 TYPES

20ft	21,000 litre
20ft	25,000 litre
20ft	26,000 litre

AVAILABLE NON-ISO T11 TYPES

7.82m Swap Body	35,000 litre
-----------------	--------------

NOTE: The dimensions and door openings of all containers correspond to ISO standards. However, due to production tolerances, a difference in measurement is possible.

DISCLAIMER: Every effort is made to ensure this information is accurate, however Triton does not assume any liability for the accuracy of the information and content provided in marketing or information materials, or for the consequences resulting from using the information and content provided. Triton does not guarantee or claim that said information and content is exhaustive. Claims as to the exhaustive nature of said information and content are excluded. The information and content is only provided for advertising purposes and is non-binding. No explicit or implied warranties or guarantees are made. The container displayed only represents a sample of the entire fleet.

The following items are registered or unregistered service marks in the United States and/or foreign jurisdictions pursuant to applicable intellectual property law and are the property of Triton International Limited and its subsidiaries: Triton® and TAL®.

HERE. THERE. EVERYWHERE

We supply the world

Triton is the largest lessor of intermodal containers in the world with over 7 million TEU of containers. Our services are available in 89 countries around the globe. So, no matter where you need containers, we'll have them nearby. To find your nearest Triton Container Sales manager visit www.tritoncontainer.com.



**Global inventory of
cargoworthy containers
for lease and sale.**



**Unrivalled container
supply at competitive
prices.**



**Outstanding and
highly responsive
customer services.**



**Global network of 20 offices
and 3 independent agencies
across 16 countries.**



**Equipment
built to the
highest quality.**



**Our size, strength and reliability
make us the go-to supplier of
intermodal shipping containers.**



TRITON

We're the biggest for a reason, contact our friendly experts and experience Triton's world-leading service and cost savings today. Imagine what we can do together.

www.tritoncontainer.com