



45ft High Dry Cube Container



CLASSIFICATION

Lease

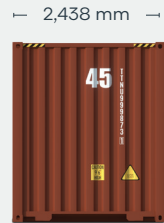
Available via Triton's global network of supply locations.

FEATURES

- Additional height provides extra internal cubic capacity, which means greater interior stacking capacity for your goods
- Manufactured with rust resistant corten steel
- Superior paint systems
- Resistant to damage and corrosion
- Secure and weatherproof, with vents to allow airflow
- Triton's industry leading new production testing and inspection criteria ensures the highest quality container
- Incredibly versatile
- Backed up by Triton's global network of supply locations and dedicated leasing and support teams
- Available globally
- IICL-6 repair criteria saves cost at off-hire
- Damage Protection Plan available to reduce costs and time at off-hire
- Flexible lease terms to meet your company needs



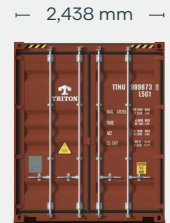
CONTAINER ROOF



CONTAINER FRONT



CONTAINER SIDE



CONTAINER REAR

DIMENSIONS (METRIC/IMPERIAL)

EXTERNAL DIMENSIONS

Length	13,716 mm	45' 0.0"
Width	2,438 mm	8' 0.0"
Height	2,896 mm	9' 6.0"

INTERNAL DIMENSIONS

Length	13,556 mm	44' 5.7"
Width	2,352 mm	7' 8.6"
Height	2,698 mm	8' 10.2"

DOOR OPENING

Width	2,340 mm	7' 8.1"
Height	2,585 mm	8' 5.8"

CAPACITY & WEIGHTS

Inside Cubic Capacity	86.0 m ³	3,040 ft ³
Max Gross	32,500 kg	71,650 lbs
Payload	27,900 kg	61,510 lbs
Tare	4,600 kg	10,140 lbs

NOTE: The dimensions and door openings of all containers correspond to ISO standards. However, due to production tolerances, a difference in measurement is possible.

DISCLAIMER: Every effort is made to ensure this information is accurate, however Triton does not assume any liability for the accuracy of the information and content provided in marketing or information materials, or for the consequences resulting from using the information and content provided. Triton does not guarantee or claim that said information and content is exhaustive. Claims as to the exhaustive nature of said information and content are excluded. The information and content is only provided for advertising purposes and is non-binding. No explicit or implied warranties or guarantees are made. The container displayed only represents a sample of the entire fleet.

The following items are registered or unregistered service marks in the United States and/or foreign jurisdictions pursuant to applicable intellectual property law and are the property of Triton International Limited and its subsidiaries: Triton® and TAL®.